



Mohammed Moola
073 407 8621
mo@primeproperty.co.za

Contact Prime Property
Umhlanga

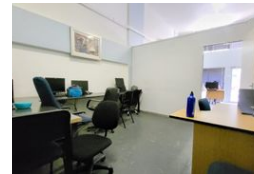
031 566 5416

Shop 5
7 on Millennium Boulevard
Umhlanga Ridge
4321

FEATURED



Web Ref CPP3942



R2,500,000

Monthly Levy R2,600 Excl. VAT

Monthly Rates R6,500 Excl. VAT

0 0

Prime 115 sqm Commercial Space – Ideal for Your Business!

Prime Property presents

The perfect space to grow your business in this spacious 115-square-meter commercial property. Strategically located in a bustling area with high visibility, this property is ideal for various business ventures, from retail and offices to boutique services. Step into an open, flexible layout that allows for customized configurations to suit your unique business needs.

With its prime location close to popular shops, dining options, and major transport routes, this space provides both visibility and foot traffic—key ingredients for business success.

Features

Zoning Commercial

Sizes

Floor Size 115m²