



**Mayur Soni**  
0722350144  
mayur@primeproperty.co.za



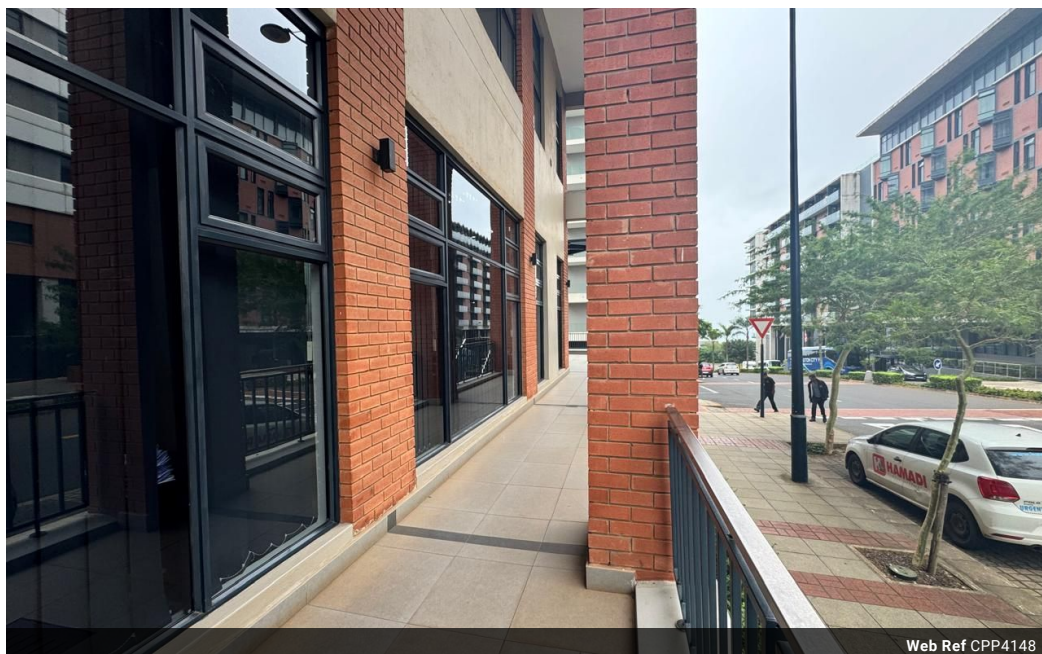
**Raj Maharaj**  
061 431 1771

raj@primeproperty.co.za

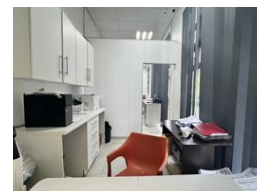
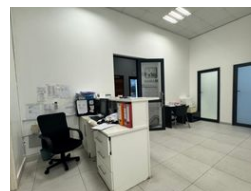
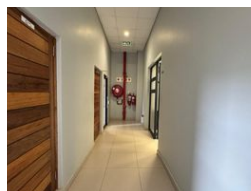
Contact Prime Property  
Umhlanga

031 566 5416

Shop 5  
7 on Millennium Boulevard  
Umhlanga Ridge  
4321



Web Ref CPP4148



**R3,500,000**

**Monthly Levy** R2,600 Excl. VAT

**Monthly Rates** R2,605 Excl. VAT

0 1

## Exceptional Medical Suite Now Available for Purchase at Umhlanga Boulevard

This Medical suite at The Madison on Umhlanga Boulevard is designed for healthcare professionals, offering a modern and functional space.

The suite typically features, a reception area with a welcoming entrance with seating for patients. Consultation Rooms, private areas for patient consultations.

Treatment rooms, designed for various procedures and storage areas, space for medical supplies and records.

The effective layout enhances focus on comfort and efficiency. Natural light is abundant, contributing to a calming environment. The location in Umhlanga is likely to be convenient, with good access for patients.

Unit has its own ablution facility for added convenience.

## Features

**Zoning** Commercial

### Exterior

Open Parking Bays 1

### Sizes

Floor Size 104m²