

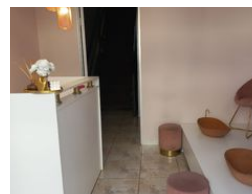


Verashka Maharaj
082 904 5909
verashka@primepropertysa.com

Contact Prime Property
Umhlanga

031 566 5416

Shop 5
7 on Millennium Boulevard
Umhlanga Ridge
4321



R3,300,000

Monthly Levy R3,047 Excl. VAT

Monthly Rates R3,447 Excl. VAT



Prime Commercial unit for Sale in Umhlanga Ridge.

Prime Property presents a 140m2 commercial unit for Sale in the New Town Centre area in Umhlanga Ridge. This modern and well positioned commercial unit offers a perfect blend of convenience and functionality and is located in the heart of Umhlanga.

On a public transport route. Centrally located.

With its prime location in one of the region's most sought-after business hubs, this commercial property is well positioned providing an opportunity for those seeking a professional office space or retail space. The possibilities are endless.

Great Investment opportunity.

Sales Price: R3 300 000.00 ex vat

The unit is presently tenanted up until January 2026.

Parking Bays x 2.

The initial size of the unit was 73m2 on the ground floor. A mezzanine level(upper level - size: 67m2) was added a few years ago.

Features

Zoning Commercial

Interior

Air Conditioning	Yes
Power 3 Phase	Yes

Exterior

Security	Yes
----------	-----

Sizes

Floor Size	140m²
------------	-------

