



Leeann Parthab  
0615837039  
leeann@primeproperty.co.za

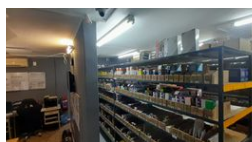
Contact Prime Property  
Umhlanga

031 566 5416

Shop 5  
7 on Millennium Boulevard  
Umhlanga Ridge  
4321



Web Ref CPP3879



**R12,000 pm**

**Gross Monthly Rental** R12,000 Excl. VAT

3 0

### The Right Location!

Prime Property presents an exceptional Light Commercial Space Available for Lease on two levels.

Location: Busy Main Road

Seize the opportunity to establish your business in this prime light commercial space located on a bustling main road, offering unparalleled visibility and accessibility. Perfectly positioned for businesses seeking high foot traffic and easy access to major transport routes.

Property Features:

Open plan layout down stairs with Kitchenette and Bathroom facility, Upstairs, 2.5 bedroom with bathroom facility

High Traffic Location: Situated on a busy main road for maximum exposure

Convenient Access: Close to all major transport routes, including public transit and major highways

Versatile Space: Ideal for various light commercial uses—retail, office, or service-based businesses

### Features

**Zoning** Commercial

#### Exterior

Covered Parking Bays 3

#### Sizes

Floor Size 129m²