

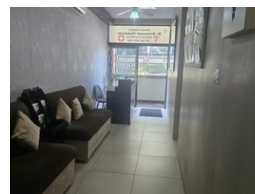
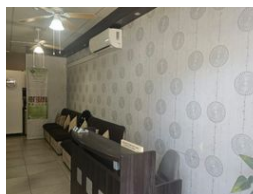
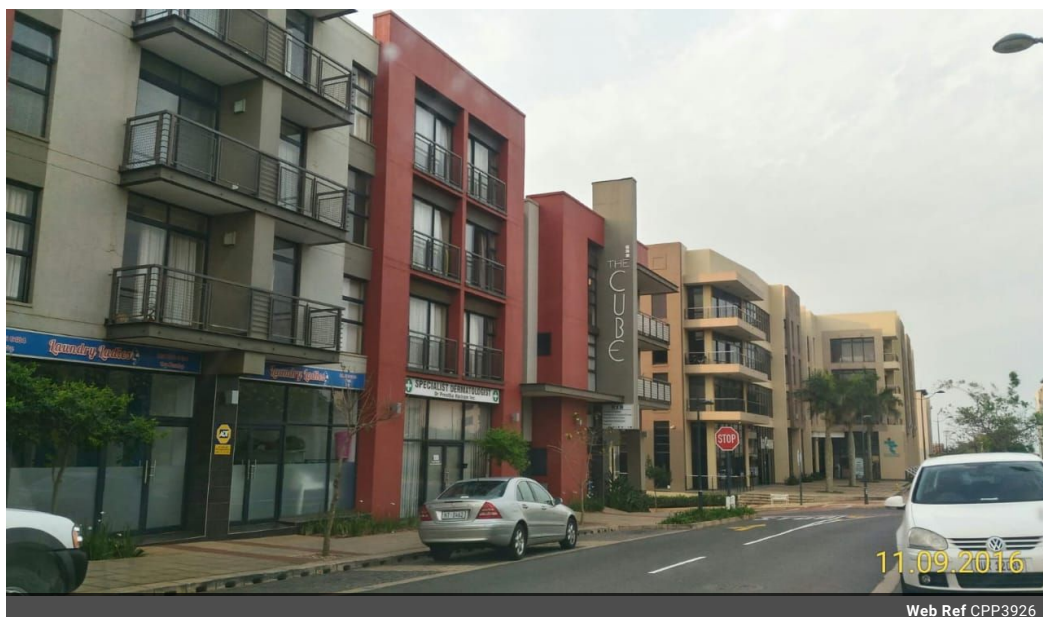


Charmaine Herbert
082 559 7496
charmaine@primeproperty.co.za

Contact Prime Property
Umhlanga

031 566 5416

Shop 5
7 on Millennium Boulevard
Umhlanga Ridge
4321



R14,000 pm

Gross Monthly Rental R14,000 Excl. VAT

0 0

69m² Office To Let in New Town Centre

Prime Property presents The Cube Office / Retail space for rent

Easy access to the shop or office.
Partitioned Office space with Toilet and small kitchen , ready for u to just bring your clients.
The Partitioning can also be removed if needed.
Safe secure unit not to be missed out
24 hour security.
Under cover parking

Features

Building Name	The Cube
Zoning	Mixed Use
Sizes	
Floor Size	69m²