



Altaaf Sheik
078 855 1344
altaaf@primeproperty.co.za

Contact Prime Property
Umhlanga

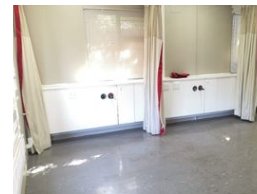
031 566 5416

Shop 5
7 on Millennium Boulevard
Umhlanga Ridge
4321

NEW



Web Ref RPP1033413



R3,950,000

4 2

Monthly Bond Repayment R40,771.44

Calculated over 20 years at 11% with no deposit.

Transfer Costs R275,550.00 **Bond Costs** R51,610.00

These calculations are only a guide. Please ask your conveyancer for exact calculations.

Monthly Rates R1,960

Attention all investors !!!

Charming Home in Prime Medical District Location

Welcome to this beautifully maintained home nestled in the heart of the city's premier medical district. Just steps away from leading hospitals, renowned research centers, and top-rated medical schools, this property offers the perfect blend of convenience and comfort for healthcare professionals, students, or investors.

Previously used as a Dialysis center, The property is wheelchair friendly and is ideal for treating patients in close range to the Hospital.

-Open and spacious yard allows ample parking

- Electric gates (remote access)

Book to view this one now !

Features

Interior

Bedrooms	4
Bathrooms	2
Kitchens	1
Recep. Rooms	2
Studies	2
Furnished	No

Exterior

Carports / Parkings	8
Security	No
Dom. Accom.	1
Pool	No
Views	False

Sizes

Land Size	990m²
-----------	-------