



**Chantell Young**  
0769379630  
chantell@primepropertysa.com



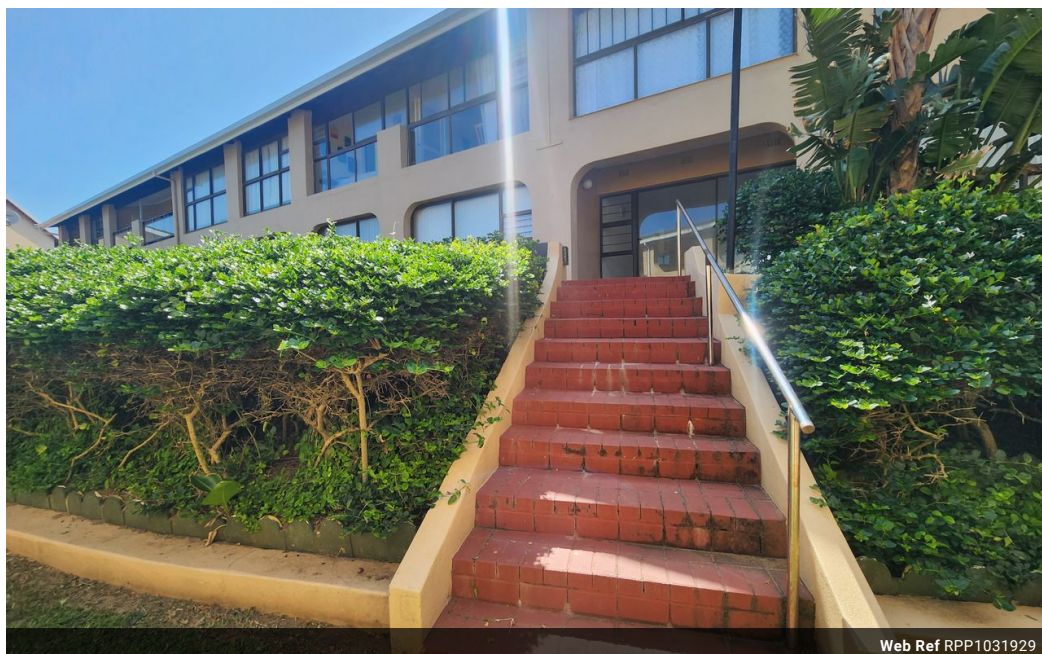
**Quinn Meecham**  
0613304145

quinn@primepropertysa.com

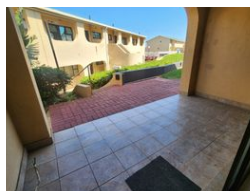
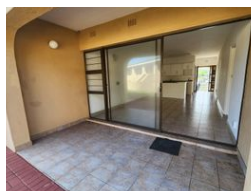
Contact Prime Property  
Umhlanga

031 566 5416

Shop 5  
7 on Millennium Boulevard  
Umhlanga Ridge  
4321



Web Ref RPP1031929



## R799,000

🛏 2 🚿 2

**Monthly Bond Repayment** R8,247.19

Calculated over 20 years at 11% with no deposit.

**Transfer Costs** R25,898.00 **Bond Costs** R19,565.00

These calculations are only a guide. Please ask your conveyancer for exact calculations.

**Monthly Levy** R2,400 **Monthly Rates** R950

## 2 Bedroom Apartment For Sale in Shelly Beach

Coastal Bliss Awaits - Ground Floor Apartment in Shelly Beach!

Discover the epitome of seaside living in this beautifully maintained ground-floor apartment, located in the highly sought-after Eden Dunes complex in vibrant Shelly Beach.

**Key Features:**

- 2 Bedrooms & 2 Bathrooms: Includes a spacious main bedroom with an en-suite, offering ultimate privacy and comfort.
- Open-Plan Design: A modern layout seamlessly connects the kitchen and living area, opening to an undercover patio perfect for soaking up ocean breezes.
- Unmatched Amenities: Just steps from the sparkling pool, communal braai area, and boasting panoramic sea views.

**Why you'll LOVE it:**

- Convenience at Your Doorstep: Walk to Shelly Centre for shopping, the Shelly Beach Ski Boat Club for adventures, and enjoy proximity to Shelly Beach Private Hospital and essential...

## Features

### Interior

Bedrooms	2
Bathrooms	2
Kitchens	1
Recep. Rooms	2
Furnished	No

### Exterior

Carports / Parkings	1
Security	Yes
Pool	Yes
Views	True

### Sizes

Floor Size	85m <sup>2</sup>
------------	------------------

