



**Netashnie Ramdulary**  
072 628 9112  
convey@primeproperty.co.za



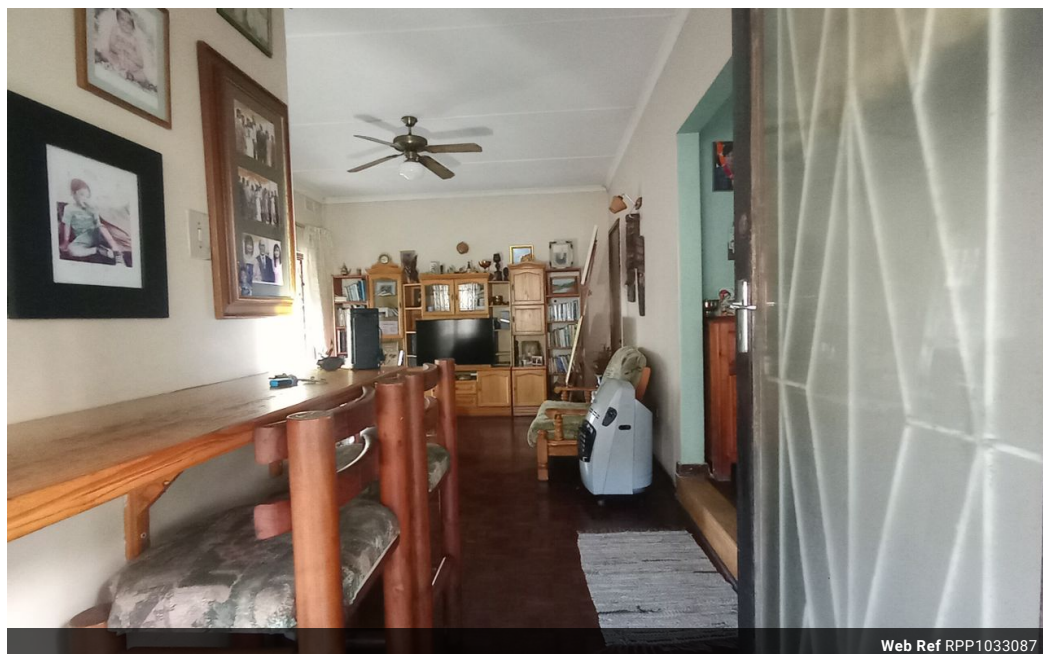
**Aadila Mahomed**  
0614134324

aadila@primeproperty.co.za

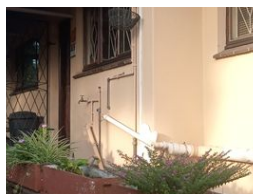
Contact Prime Property  
Umhlanga

031 566 5416

Shop 5  
7 on Millennium Boulevard  
Umhlanga Ridge  
4321



Web Ref RPP1033087



**R1,590,000**

3 3

**Monthly Bond Repayment** R16,411.80  
Calculated over 20 years at 11% with no deposit.

**Transfer Costs** R48,485.00 **Bond Costs** R28,990.00

These calculations are only a guide. Please ask your conveyancer for exact calculations.

**Monthly Rates** R1,250

## Looking for a Family Home to Call Your Own

Built below road level, this double storey home offers 3 well-sized bedrooms—2 of which are air-conditioned—along with a comfortable lounge, dining room, and a functional kitchen. All bedrooms are fitted with built-in cupboards. The living area is also fitted with air conditioning for added comfort. The home features elegant Swiss parquet flooring throughout, with practical tiling in the kitchen, bathroom, and toilet. A compact laundry room adds to the home's functionality.

A large veranda overlooks the yard, which is surrounded by vast greenery—offering a serene outdoor setting perfect for relaxing or entertaining.

Additional features include a basement area available for tenants, as well as a private 2-bedroom flatlet situated out of sight from the main home. This flatlet offers excellent potential to generate rental income...

## Features

Pets Allowed		Yes			
Interior				Exterior	
Bedrooms	3			Carports / Parkings	15
Bathrooms	3			Security	Yes
Kitchens	1			Pool	No
Recep. Rooms	2			Views	True
Furnished	No			Sizes	
				Land Size	1,569m²