



Leeann Parthab
0615837039
leeann@primeproperty.co.za

Contact Prime Property
Umhlanga

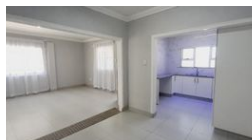
031 566 5416

Shop 5
7 on Millennium Boulevard
Umhlanga Ridge
4321

NEW



Web Ref RPP1033400




R8,000 pm

Lease Period 12 months
Annual Escalation -

Availability Immediately

Deposit R8,000

 2  1

A Hidden Gem

Prime Property Presents this charming cottage nestled in the peaceful and sought-after suburb of Moseley, this delightful 2-bedroom, 1-bathroom cottage offers comfort, character, and calm in equal measure. It features Two cozy, light-filled bedrooms, A well-maintained bathroom with modern fixtures, Inviting living space perfect for relaxing or entertaining, Spacious kitchen with ample storage a glass cooker with under counter oven . Beautifully kept garden – ideal for morning coffees or quiet evenings Situated on a serene street with friendly neighbors and little traffic

Prepaid Utilities, Jojo Tank

Peaceful suburban setting with a strong community vibe, Close to local shops, parks, and public transport
Easy access to schools and amenities.

Don't miss this rare opportunity to own a slice of serenity in Moseley.

Features

Interior

Bedrooms	2
Bathrooms	1
Kitchens	1
Recep. Rooms	2
Furnished	No

Exterior

Carparks / Parkings	2
Security	No
Pool	No
Views	False

Sizes

Floor Size	89m²
------------	------